



Forté/UDS Overview

Tom Childers
Staff Software Engineer



UDS Overview

- What is it?
- Portability/Interoperability
- Reliability
- Scalability
- Performance
- Open Architecture
- System Management
- IDE Examples

What Is It?

- Integrated Development Environment
- Object-oriented system and Framework
- Transparent platform support, universal RDBMS access
- Architected for distributed applications
- Built-in failover, load-balancing, system management
- Application integration toolkit for everything from PC's to mainframes
- High performance, generates and deploys C++

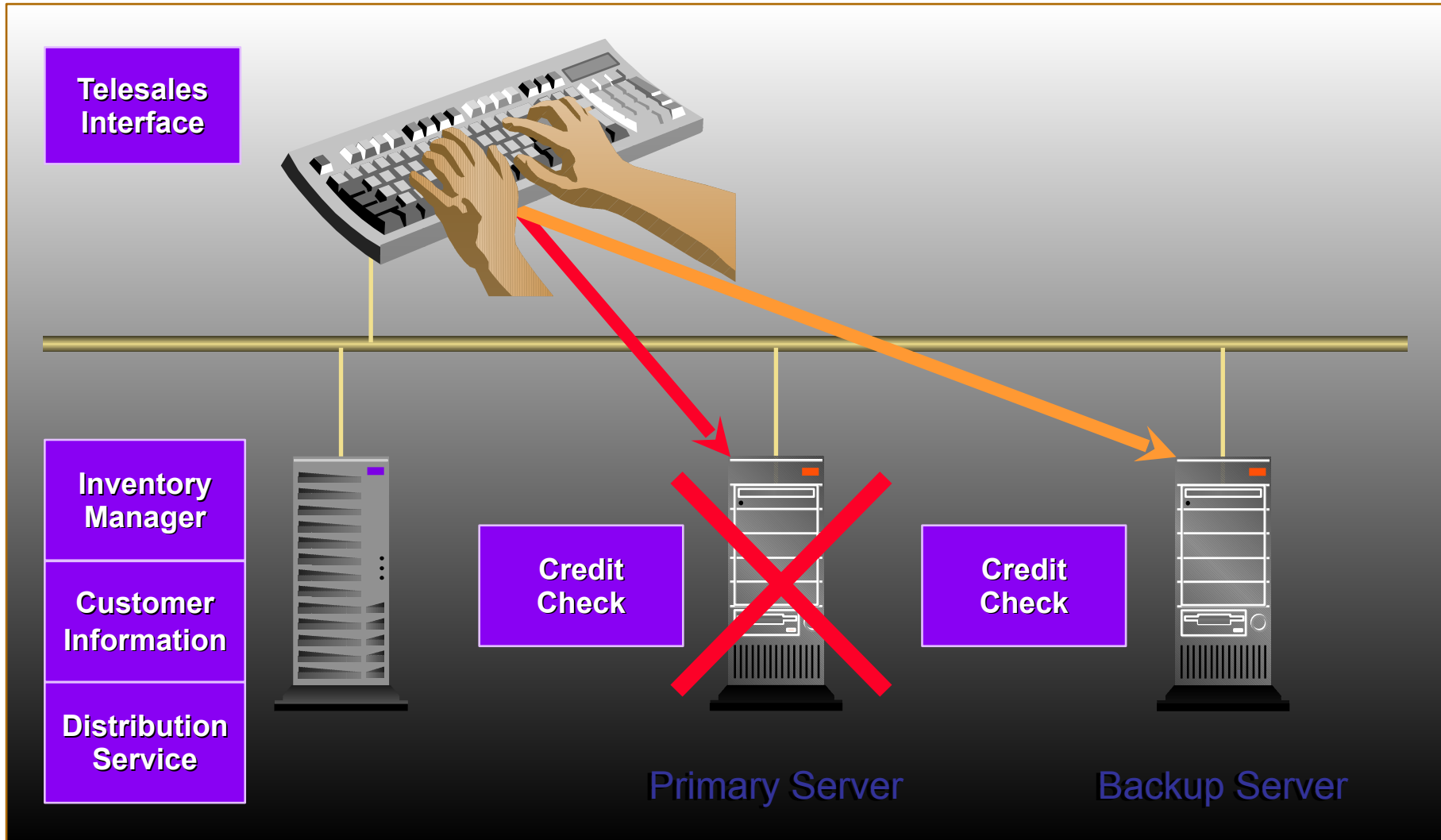
Portability

- Supports all core platforms
 - > Sun Solaris, IBM AIX, HP/UX, HP/Compaq Tru64 Unix and OpenVMS, Microsoft Windows 2000/2003/XP/Vista, IBM zOS
- Supports all core RDBMS products
 - > Oracle, Sybase, Informix, IBM DB2, Microsoft SQL Server
- Minimal restrictions
 - > Windows 2000/2003/XP/Vista are client-only
 - > zOS is server-only, UI must run elsewhere

Interoperability

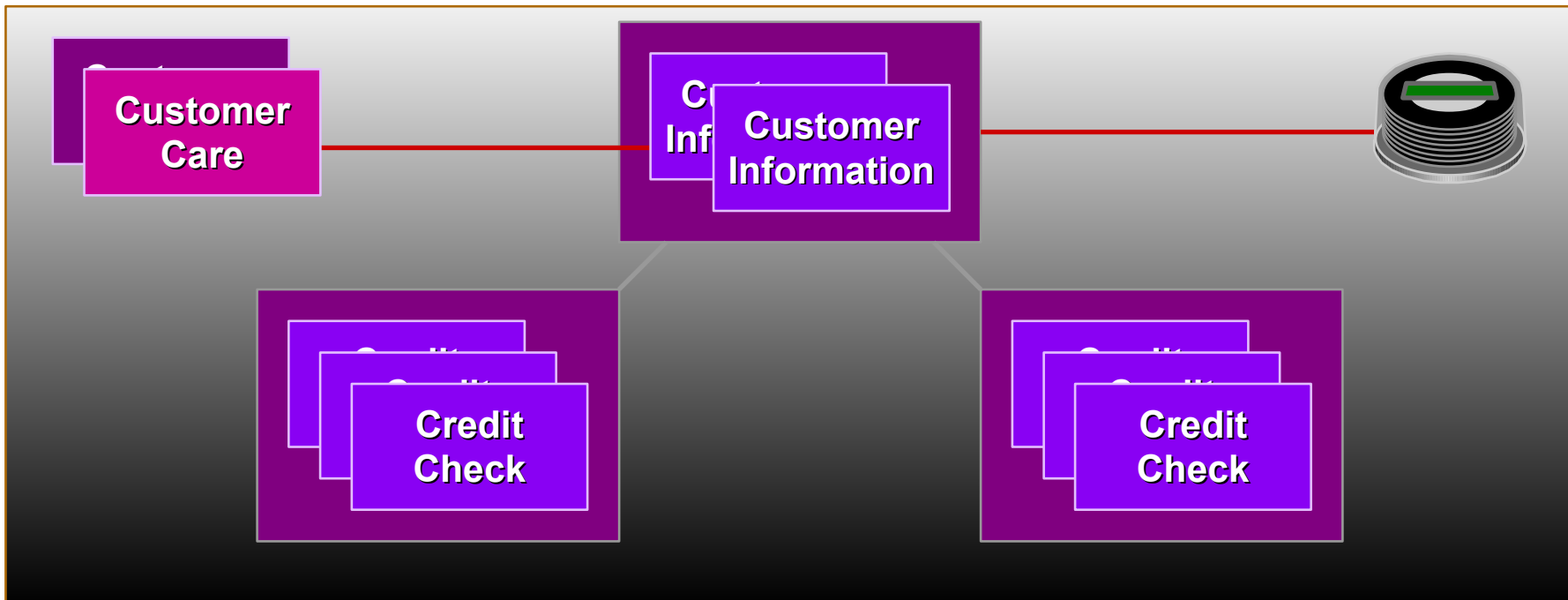
- All platforms fully interoperate, no restrictions
- Codeset and numeric format translation handled automatically
- Full support for EBCDIC, Unicode UTF-8, Asian character sets on all platforms
- Integer and floating-point formats converted automatically
- GUI applications deploy identically to Windows and X-
Windows (Unix) platforms

Reliability - Automated Failover



Scalability

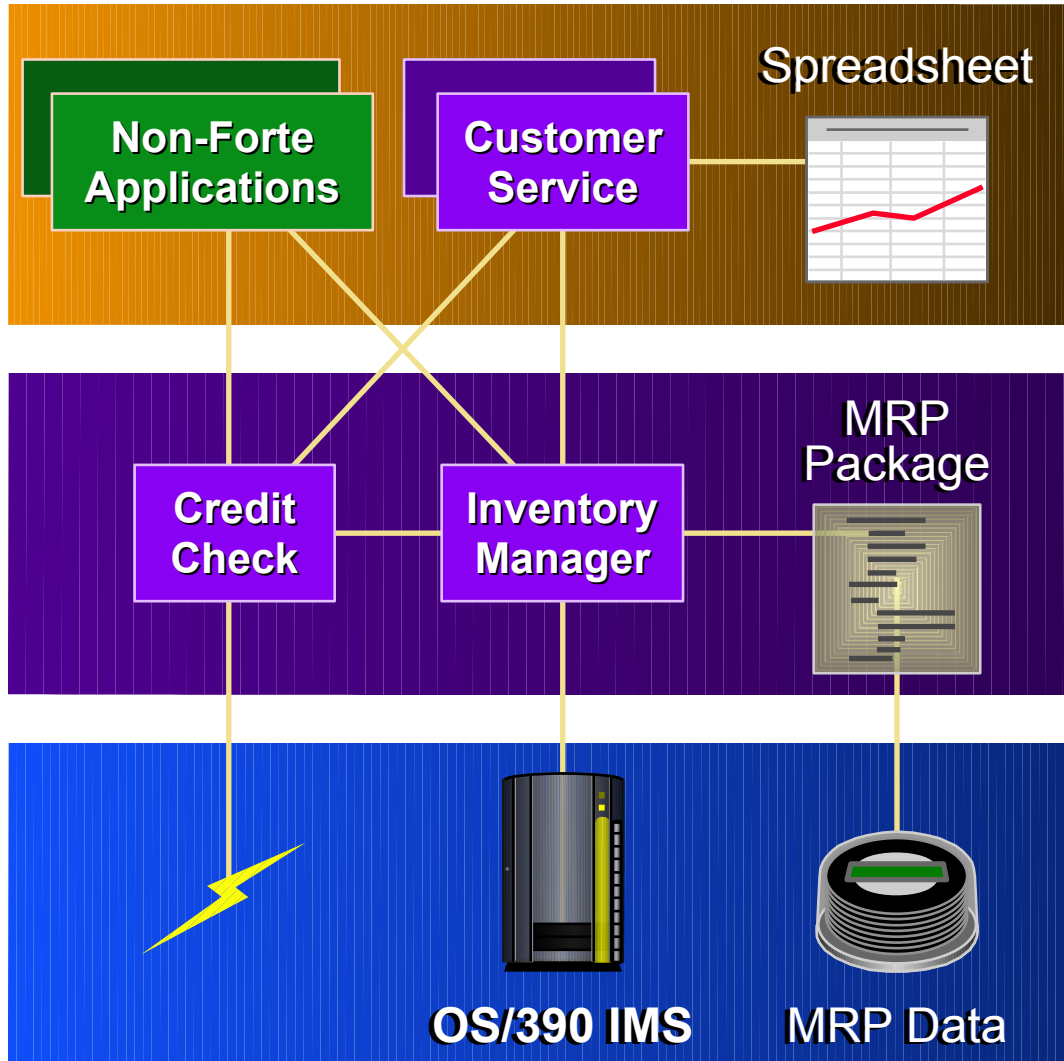
- Automated Load Balancing distributes work across systems



Performance

- Applications run either interpreted or compiled
- Compiled applications are automatically generated, compiled, optimized and deployed in C++
- Full native thread support, scales well on multiprocessors
- Point and click, drag and drop deployment

Open Architecture



• Desktop

- VisualBasic, PB, Java, etc.
- ActiveX
- OLE
- 3GL Wrappers

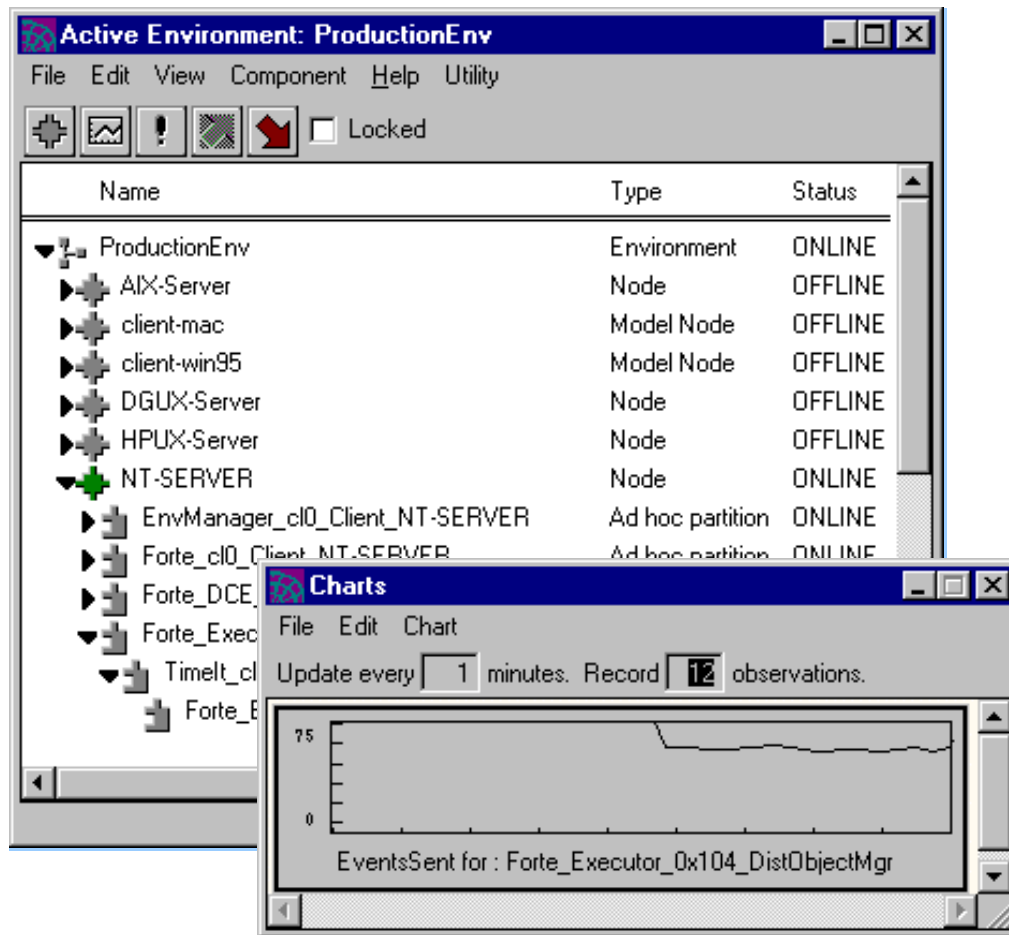
• External Systems

- HTTP, XML, SOAP
- IIOP/CORBA
- DCOM
- C++, TCP/IP Sockets
- 3GL Wrappers

• Mainframe

- Native Deployment
- DB2/MVS, COBOL
- IMS, CICS Transactions

System Management

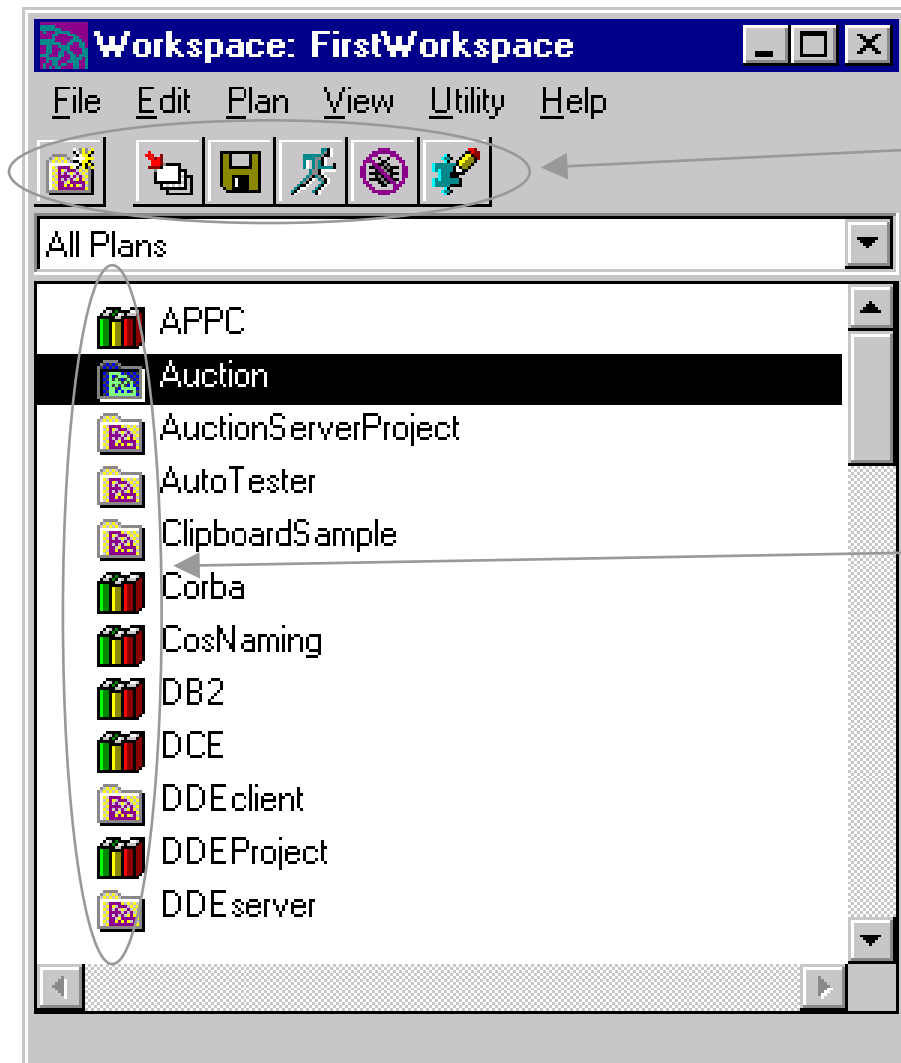


- **Monitor**
- Running Partitions
- All hardware from single UI
- Message & Event Traffic
- OS Details, memory use
- Partition Failover
- Sampling with GUI output
- **Control**
- Install Partitions
- Start/Stop Partitions
- Define New Nodes & Resources
- **Agents**
- System & User Defined
- Programmatic access
- Enables Custom Monitoring & Management

Release History

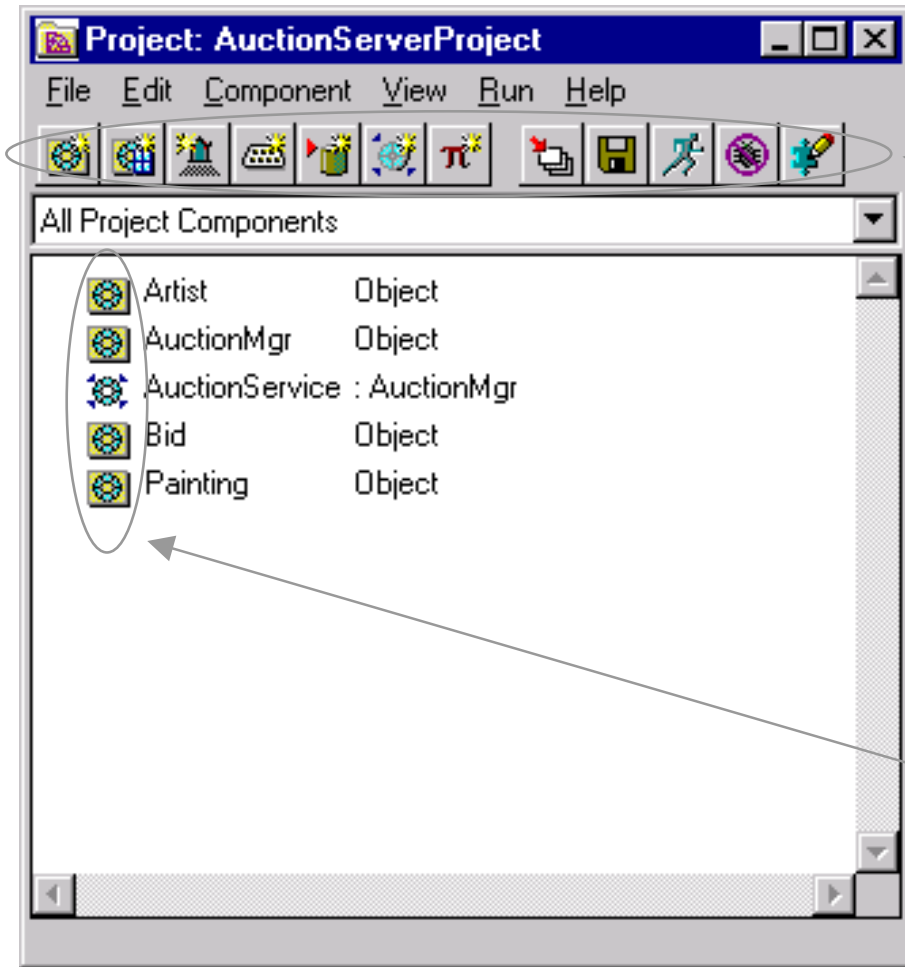
- Originally released as Forte Application Environment in 1996
- UDS 3.5 Nov 2000
- UDS 5.0 Sep 2001
- UDS 5.1 Oct 2002
- UDS 5.2 Sep 2004

IDE Examples: Workspace Window



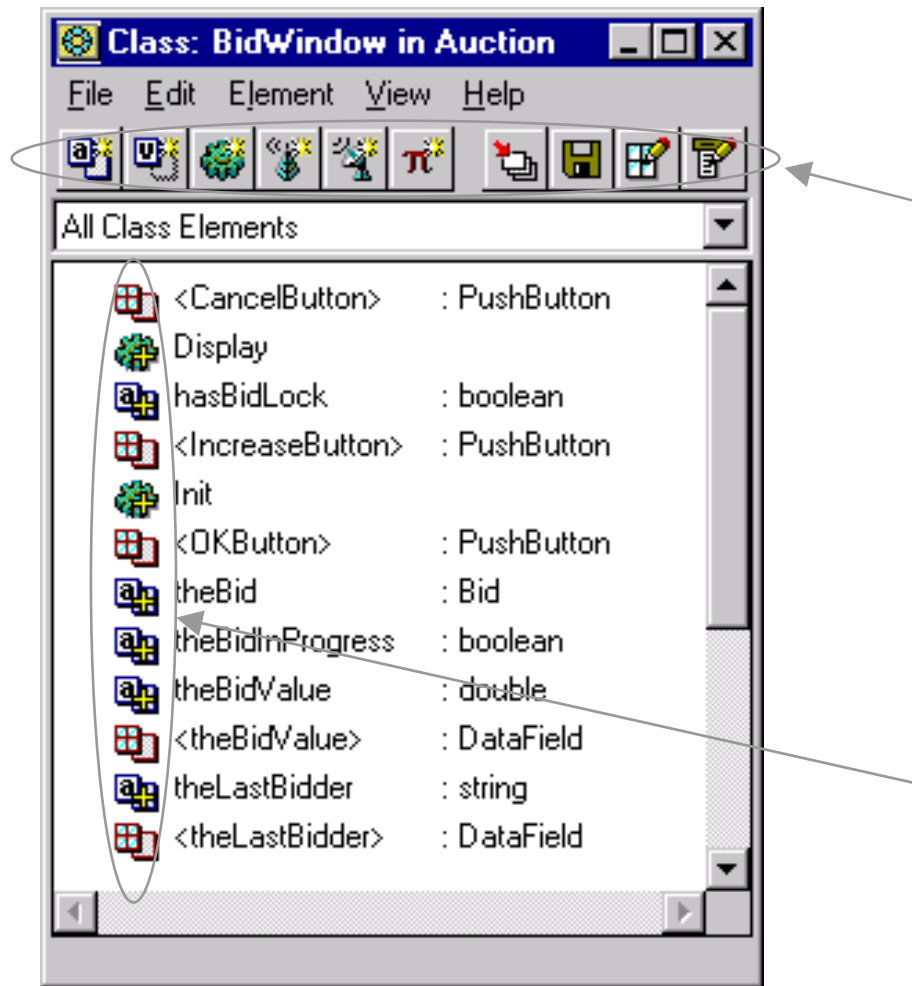
	create new project
	compile project
	open partition workshop
	project
	library

IDE Examples: Project Window



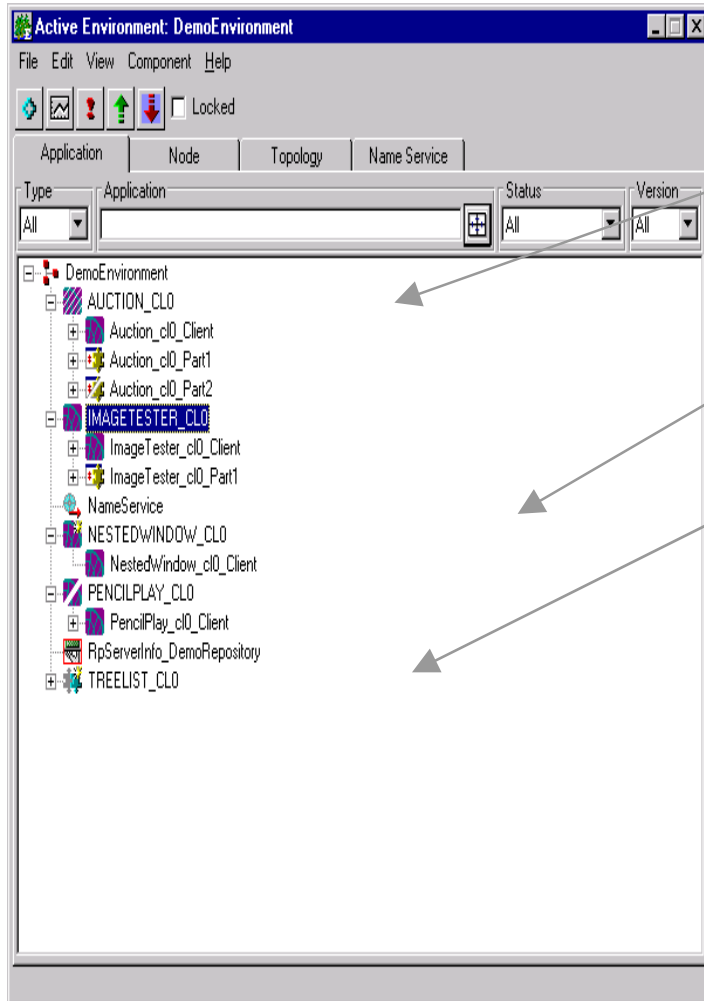
	create nonwindow class
	create new window class
	create new cursor
	create new service object
	compile project
	open partition workshop
	window class
	nonwindow class
	service object
	cursor

IDE Examples: Class Window



	create new attribute
	create new virtual attribute
	create new method
	compile project
	open window workshop
	open menu workshop
	private attribute
	private virtual attribute
	private method
	public method
	window attribute
	open menu workshop

IDE for System Admin - EConsole

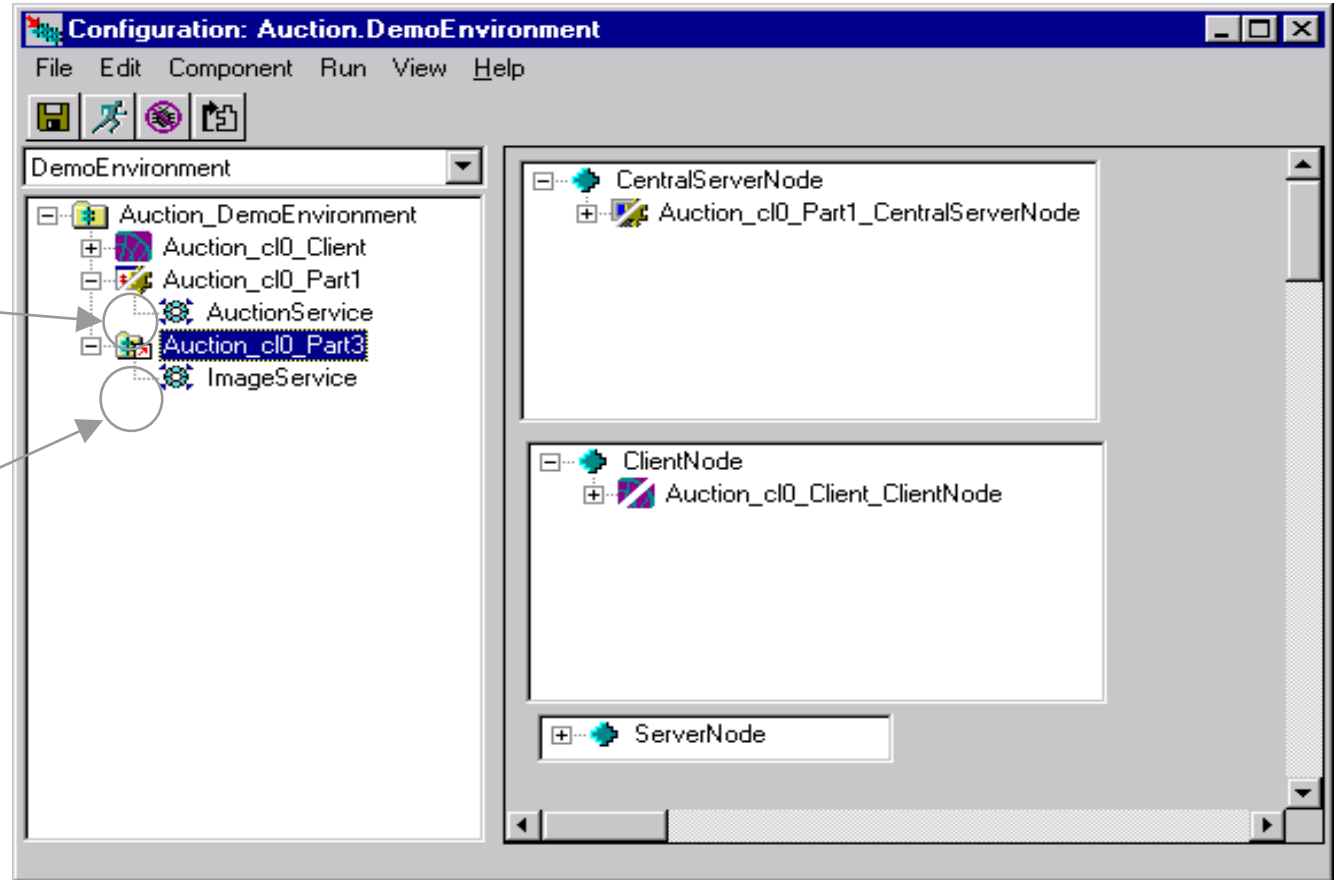


Icon	Status
	Application is degraded
	Application is online
	Application is loaded but not installed
	Application is offline
	Application is not loaded
	Active partition is online
	Active partition is offline
	Active partition is degraded
	Installed partition is online
	Installed partition is offline
	Installed partition is degraded
	Logical partition is online
	Logical partition is offline
	Logical partition is degraded

IDE for Partitioning

Logical Partition

Reference Partition



- Drag-and-drop application elements to the target systems

Questions



Thank you.

